

EC800X_ ()
CAT1 EC800 layout

	1
1	4
1.1	4
2	“ ”	5
2.1	5
2.2	“ ”	5
2.3	6
2.4	6
2.5	6
3	“ ”	7
3.1	7
3.2	*	9
3.3	10
3.4	11
3.5	GNSS	11
3.6	WiFi_Scan	11
4	12
4.1	13
4.2	14
5	15
5.1	15
5.2	16
5.3	16
6	16

6.1	16
6.2	17
6.3	17
7	18
7.1	18
7.2	18
8	19
	19
USB_BOOT	19
8.3	19
8.4	19
	20
	20

1

1.1

V1.0

V1.1

V1.2

V1.3

ADC

V1.4

R/PK

*

2.3

2.4

2.5

1 30M/

3 " " *

EC800X

EC800X

2.54mm

-pin

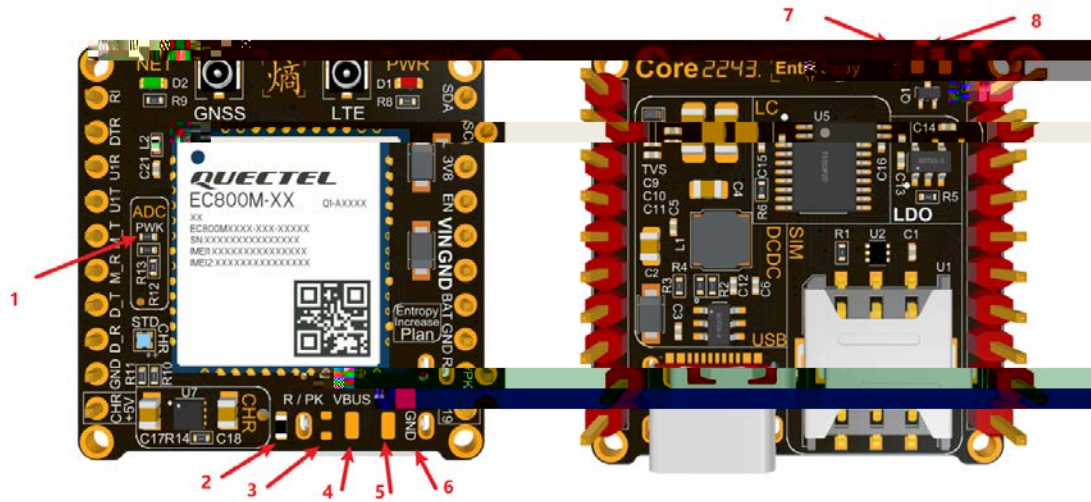
3.1

1	RI	MAIN_RI
---	----	---------

8	D_R	DBG_RXD
9		

3.2

*

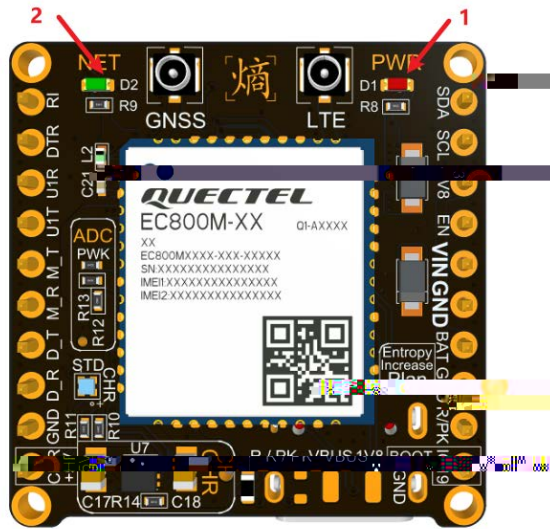


- 1 PWK: powerkey
- 2 RST: reset 0 R/PK
- 3 PK: powerkey 0
- 4 VBUS: USB_VBUS
- 5 1V8: VDD_EXT
- 6 GND:
- 7 GND:
- 8 V3.3: LDO 3.3V

1 PWK 2 RST 0

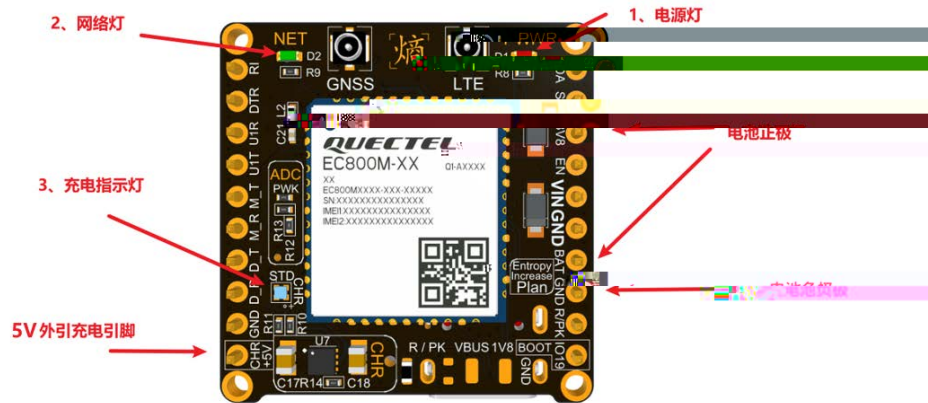
3 PK R/PK

3.3



1		1	2
2	1	2	
3	1	2	
4	1	2	
5		1	2
*		1	2

3.4



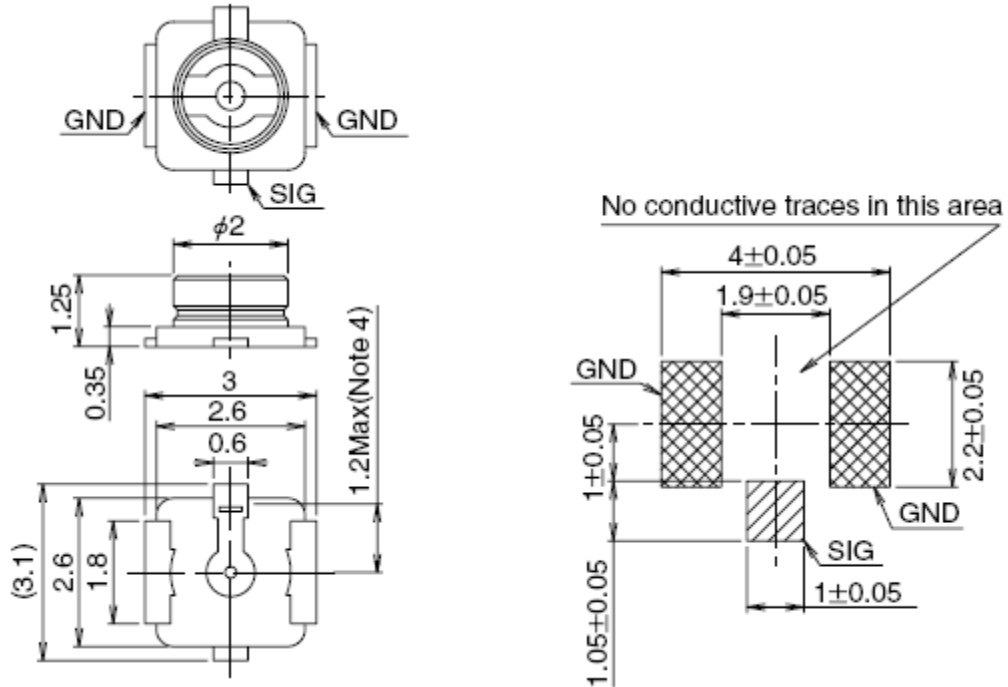
1				3V8	BAT
			GND		
2	1		Type-C	Type-C	CHR
	5V	1	3		
3	2		1	3	
*		3.7V	4.2V		
	4.2V				
		ADC			ADC
		ADC:VBAT=1:4			

3.5 GNSS

	EC800MCNGA	GNSS	IPEX
GNSS			

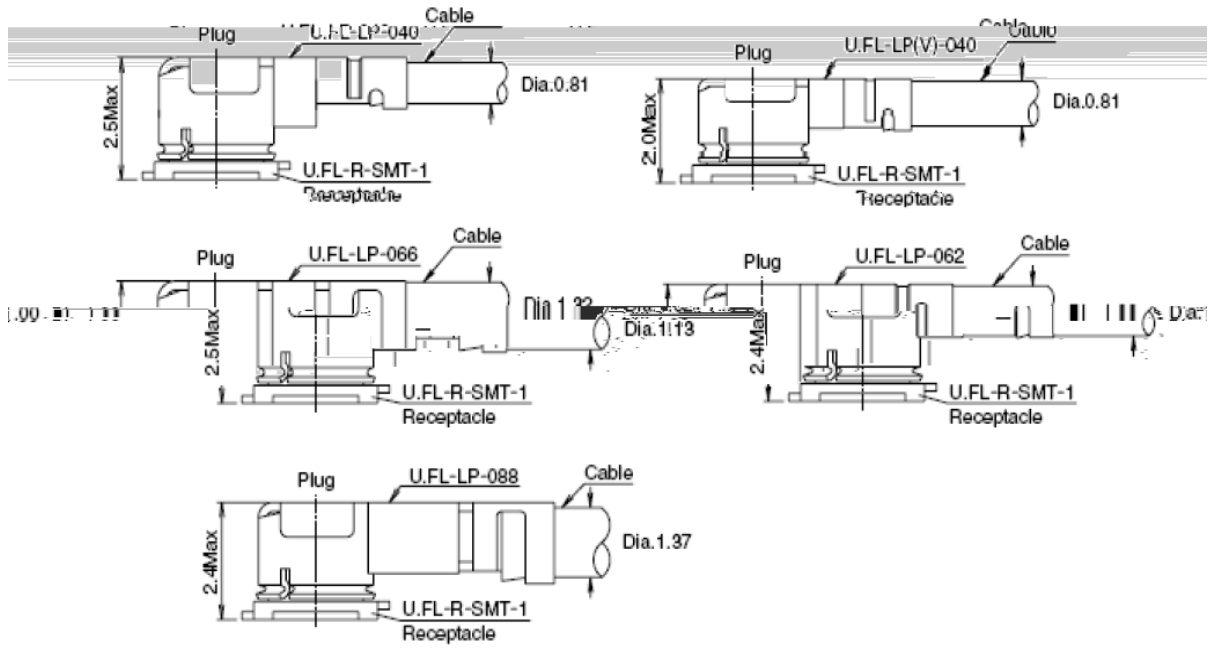
3.6 WiFi_Scan

WiFi_Scan	WiFi_Scan	LTE
-----------	-----------	-----



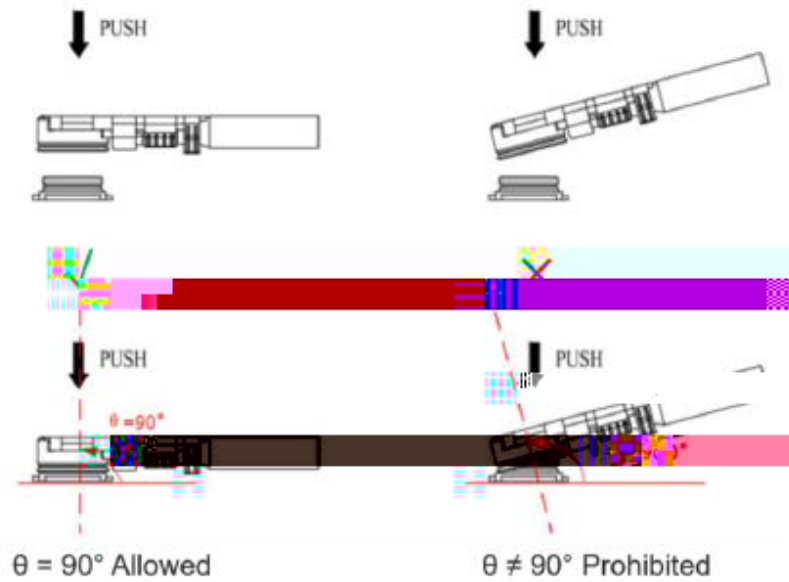
U.FL-LP

	U.FL-LP-040	U.FL-LP-066	U.FL-LP(V)-040	U.FL-LP-062	U.FL-LP-088
Part No.					
Mated Height	2.4mm Max. (2.3mm Nom.)	2.5mm Max. (2.4mm Nom.)	2.5mm Max. (2.4mm Nom.)	2.0mm Max. (1.9mm Nom.)	2.4mm Max. (2.3mm Nom.)
Applicable cable	Dia. 1.37mm Coaxial cable	Dia. 0.81mm Coaxial cable	Dia. 1.13mm and Dia. 1.32mm Coaxial cable	Dia. 0.81mm Coaxial cable	Dia. 1mm Coaxial cable
RoHS	NO	NO	NO	YES	YES

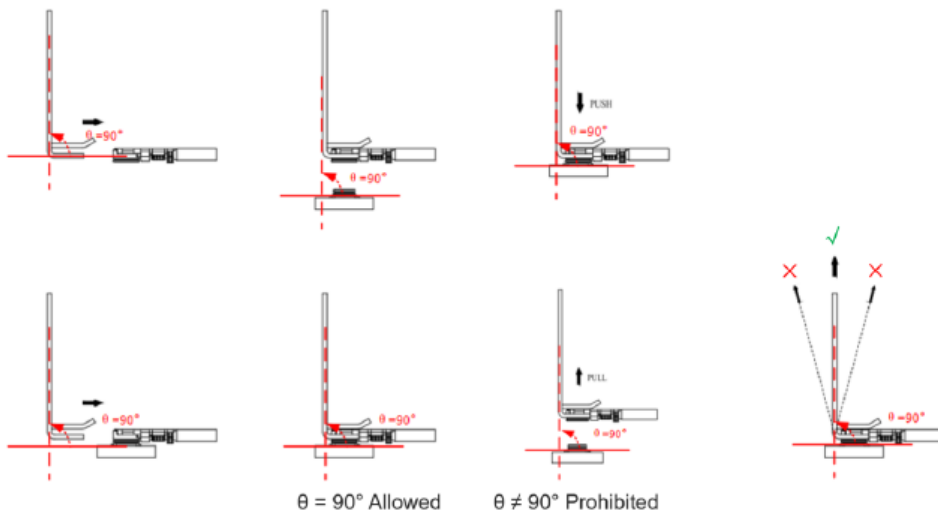


4.1

90



4.2



5

EC800X

5.1

EC800X

USB

	4.6	5.0	5.1	V
--	-----	-----	-----	---

I/O

VIH	$0.7 \times VCC$	$VCC + 0.3$	V
VIL	-0.3	$0.3 \times VCC$	V
VOH	$VCC - 0.5$	VCC	V
VOL	0	0.4	V

* VCC 3.3V,

5.2

ESD

±5	±10	
±4	±8	kV
±0.5	±1	kV

5.3

-35	+25	+75	°C
-40		+80	°C
-40		+90	°C

* 1 3GPP
2

3GPP

3GPP

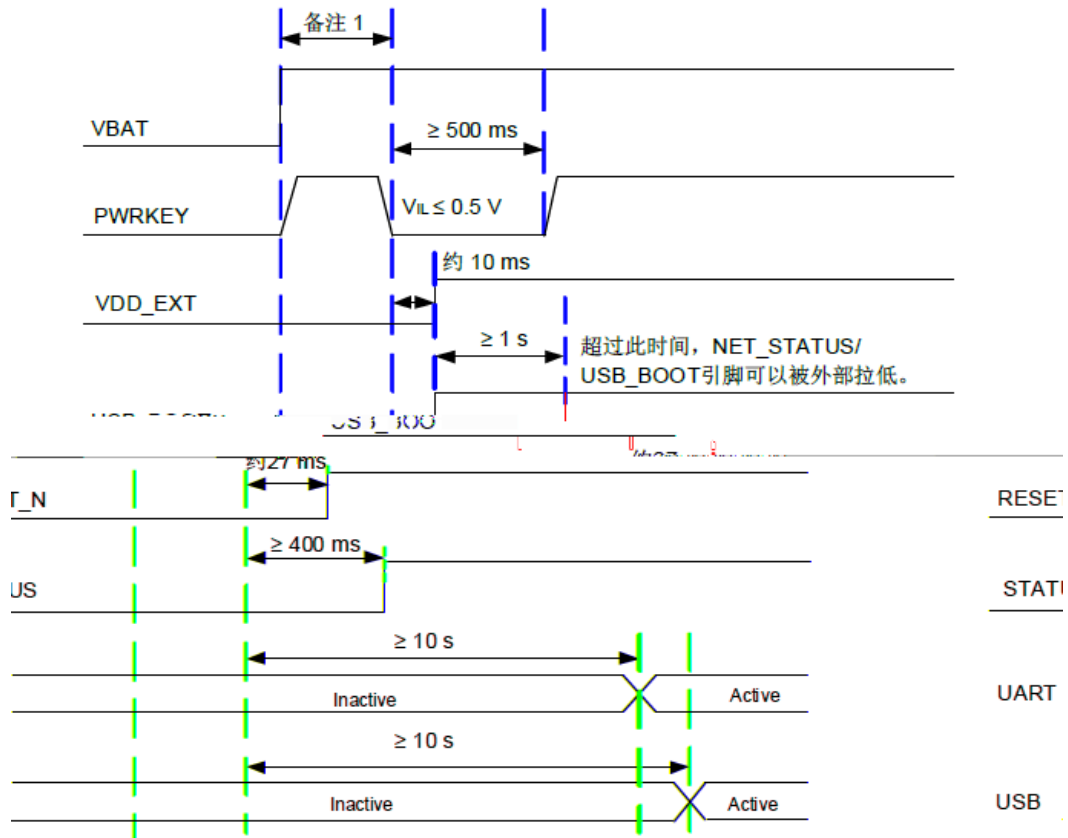
6

6.1

PCB

6.2

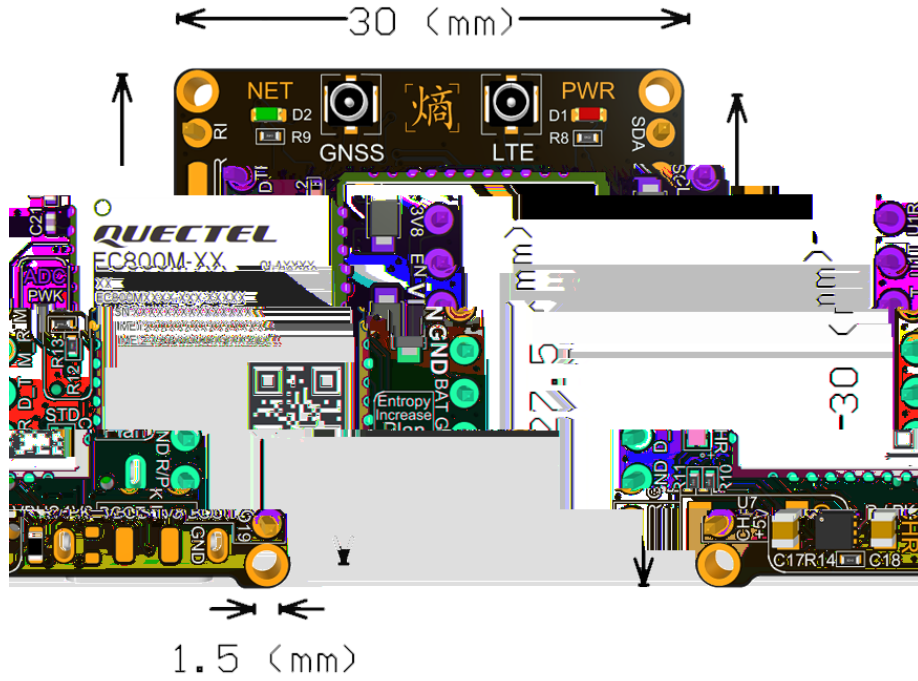
6.3



*

7

7.1



7.2

EC800X () FPC

8

8.1

EN

8.2 USB_BOOT

USB_BOOT (IO19)
IO19 AT AT+QDOWNLOAD=1
IO19

8.3

USB USB USB

8.4

3.7V 4.2V
4.2V

